

L-7539 Green S1P

Slip-On Safety Shoes

Upper : Black Cow Nubuck+Oxford Fabric

Lining : Breathable Sandwich Air Mesh

Insole : Soft Hi-polyu Insoles

Outsole : EVA/Rubber Cement Outsole

Toecap : Composite Toecap

Penetration : Kevlar Midsole Plate

Size : EU 38-46#, UK 4-12#, US5-13#

CE EN ISO 20345:2011 S1P SRC

Application : Construction, Logistics, Mechanics, Glasses Installation, Workshop, Oil & Gas, Chemical Factory etc



200 JOULE
TOECAP



SLIP-
RESISTANT



SHOCK
ABSORPTION



ANTI-STATIC



ANTI-NAIL
MIDSOLE



PETROL AND
CHEMICAL
RESISTANT



OIL
RESISTANT



Composite Toe Cap Protection • AN1-EN12568

It is made with light weight fiber-glass material, which can reach 200 joules from falling or rolling objects. It is stronger and more light than steel toecap.



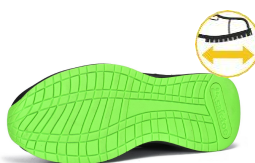
Kevlar Plate Protection • AN1-EN12568

Kevlar midsole plate, is zero-penetration resistant. It can resist 1100 newtons nail puncture from sharp objects. It is stronger and more flexible than steel plate.



Black Cow Nubuck Leather Upper • CE EN ISO 20345:2011

High quality cow nubuck Leather with thickness 1.6-1.8mm. It is treated with breathable technology to keep feet from dry during walking all days. Tear strength is required 10% higher than Europe test requirement, to reach longer lifespan.



Heavy Duty EVA/Rubber Outsole • CE EN ISO 20345:2011

The outsole is made with EVA/Rubber material. The midsole is 40±5 degree hardness EVA, which is soft and shock absorption. The outsole is natural rubber with 5%-10% nitrile, which can pass 300 °C heat resistant HRO test.

Sole Bonding Strength Test

- EN ISO 20344:2011, 5.2 (Between Upper & Sole)
- Average Test Result 5.8 ± 5 (N/mm)



Upper, Lining & Bonding Strength Test Result

Upper Tear Strength \geq	60.0 Newtons
Upper Tensile Properties \geq	15.0 N/mm ²
Lining Tear Strength \geq	15.0 N/mm
Bonding Strength \geq	4.0 N/mm

✓ Protection With Slip Resistant (SRC)	Result
Test Requirement : SRA (Eurotile 2+Nal S) Forward Heel Slip ≥ 0.28 & Forward Flat Slip: ≥ 0.32 SRB (Steel Floor+Glycerine) Forward Heel Slip ≥ 0.13 & Forward Flat Slip: ≥ 0.18	PASS
Standards : EN ISO20344:2011(5.11) , SRC Means both SRA & SRB requirements are fulfilled.	
✓ Protection With Anti-Static	Result
Test Requirement : Anti-static 100K Ω -1000M Ω , Test Voltage: 100 \pm 2 V DC, Test Period: 1 Minute	PASS
Standards : EN ISO 20344:2011(5.10) Dry Humility (30 \pm 5) & Wet Humility (85 \pm 5)	
✓ Protection Resistant to Fuel Oil	Result
Test Requirement : Change in Volume and Change in Hardness (Outsole) is No More Than +12%(*)	PASS
Standards : EN ISO 20344:2011(8.6.1)	
SAFETOE Standard Package Instruction (Average 42# for Reference)	
Shoes Weight : 1.1-1.2 KGS /Pair	Carton Weight : 12-13 KGS /Carton
1 Pair / Color Box , Dimensions : 32 \times 21 \times 12CM	10 Pair / Carton , Dimensions : 62 \times 43 \times 33CM



User Instructions:

- 1.) RECOMMENDED TO USE : Construction, Logistics, Mechanics, Glasses Installation, Workshop, Farming, Garden, Oil & Gas, Chemical Factory etc.
- 2.) LIMITATION TO USE: It is very important that footwear selected must be suitable for the right workplaces. The protection against risks or hazards which are not mentioned in this document is not warranted.
- 3.) FITTING & SIZE: All footwear are marked with standard size on tongue label. Some are with different size comparison, such as EU size, UK size, US size etc. Please wear footwear in a suitable size.

- 4.) STORAGE: Keep the footwear in its original packaging, under ordinary temperature, non-humidity conditions and in clean, covered and ventilated premises.
- 5.) CLEANING: Clean footwear regularly by high quality cleaning treatments recommended as suitable for the purpose. Don't use caustic or corrosive cleaning agents.